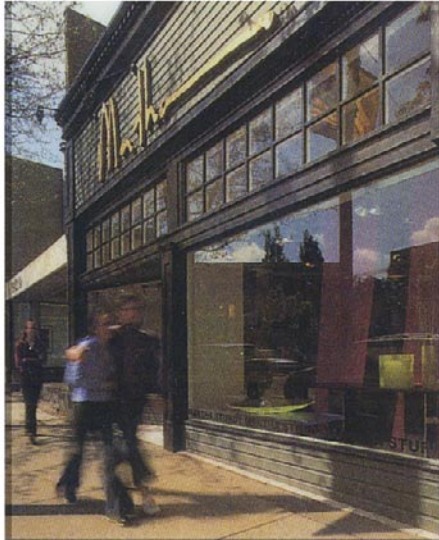


Designers Discover Design

A Big Find in Vancouver



I'm always looking for large-scale things, and she has some humongous pieces," says **Paul Lavoie**. The designer is a regular client of **Martha Sturdy**, known for her resin tableware and furniture, often of a massive size. "I've bought huge bowls in vibrant colors from her—that

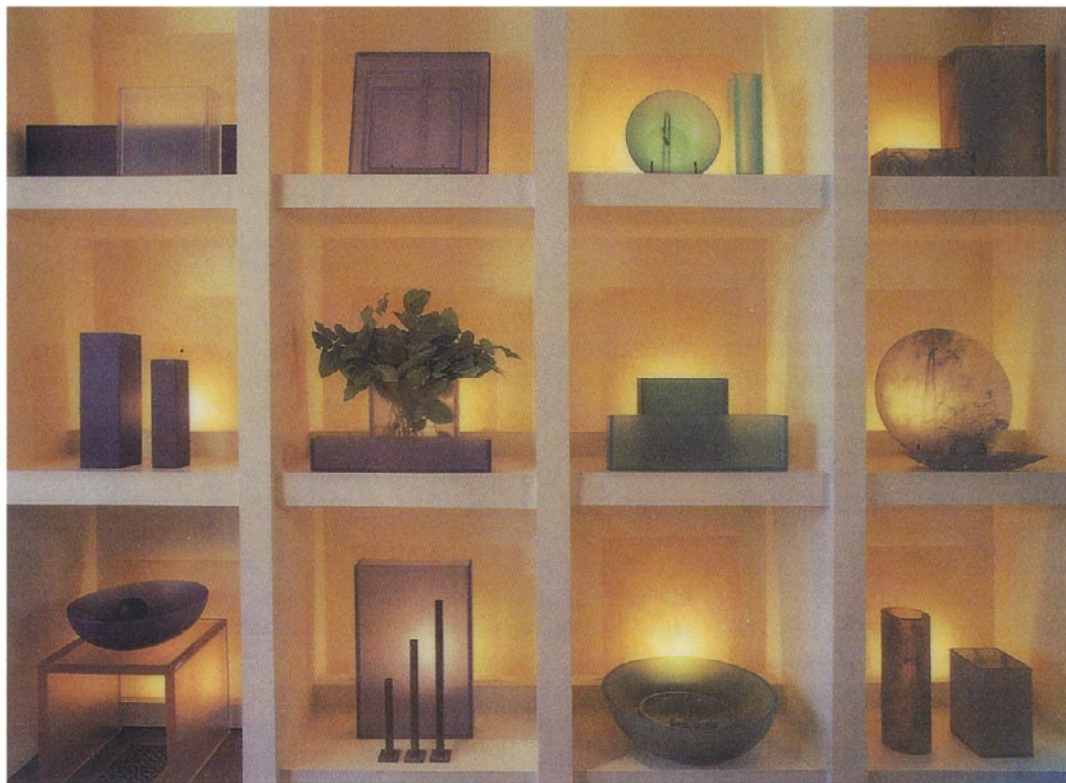
take about three people to lift—many, many times," says Lavoie.

Sturdy, who was a successful jewelry designer in the 1980s, began creating items for the home in the '90s. She now of-

fers, from her Vancouver shop, pieces in resin and metal, including bold wall sculptures. "She uses inventive materials," says Lavoie, "but her designs have a purity and simplicity to them."

Martha Sturdy's loft-like shop, above, in Vancouver, showcases the overscale pieces she's known for.

Martha Sturdy Originals, 3039 Granville St.
Vancouver, B.C., Canada; 604-737-0037, www.marthasturdy.com



Sturdy often works in resin to create colorful tabletop pieces, left, such as clean-lined bowls and vases.